

# THE LION, THE WITCH, AND THE WARDROBE

C.S. LEWIS

## CHAPTER THREE: EDMUND AND THE WARDROBE

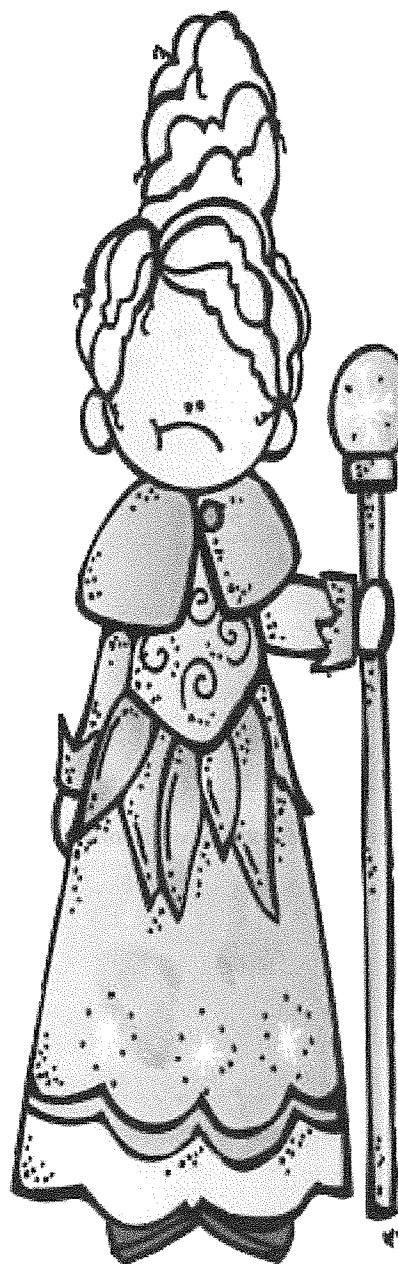
### VOCABULARY:

- Spiteful
- Sneer
- Jeer
- Gilded
- Sledge
- Unexpectedly
- Sulking
- Flung

### QUESTIONS:

1) Describe Edmund's experiences when he leaves the wardrobe.

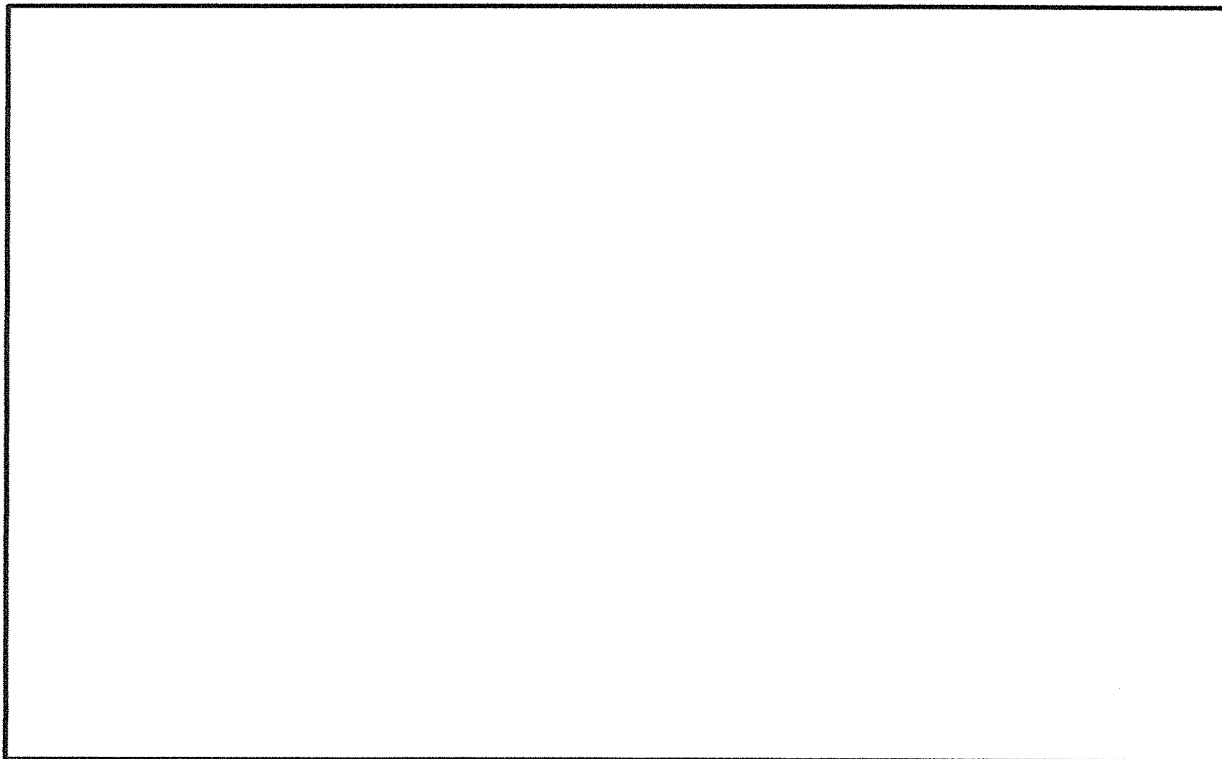
2) The other children don't believe Lucy when she tells them about her adventures. Why?



3. Why didn't Edmund see Lucy when he entered Narnia?

4. What was Edmund's first impression of the Queen of Narnia?

5. What do you think the Queen looked like? Illustrate her in the space below.

A large, empty rectangular box with a solid black border, intended for a student to draw an illustration of the Queen of Narnia. The box is positioned below the text of question 5.